

# Level 2 Certificate in Highway Electrical Work - Slot Cutting



## At a glance...

### Qualification

Duration Notes:	The expected total qualification time is 160 hours, however please note this may vary according to factors such as level of experience, modules or attachments selected, or the ratio of Instructors to Learners.
Recognised by:	National Highway Sector Scheme (NHSS).

### Introduction

Gain a nationally recognised Level 2 qualification to boost your career in the highway electrical sector.

### Overview in brief

Lantra's Highway Electrical Vocationally Related Qualifications (VRQs) meet the requirements of the National Highway Sector Scheme (NHSS) 8, the Highway Electrical Registration Scheme (HERS) and the knowledge requirements of the relevant units for the National Vocational Qualification (NVQ) Level 2 and 3 for the Highway Electrical Sector.

These qualifications will provide you with the essential knowledge, understanding and skills required to support achievement and progression in a career in the highway electrical sector.

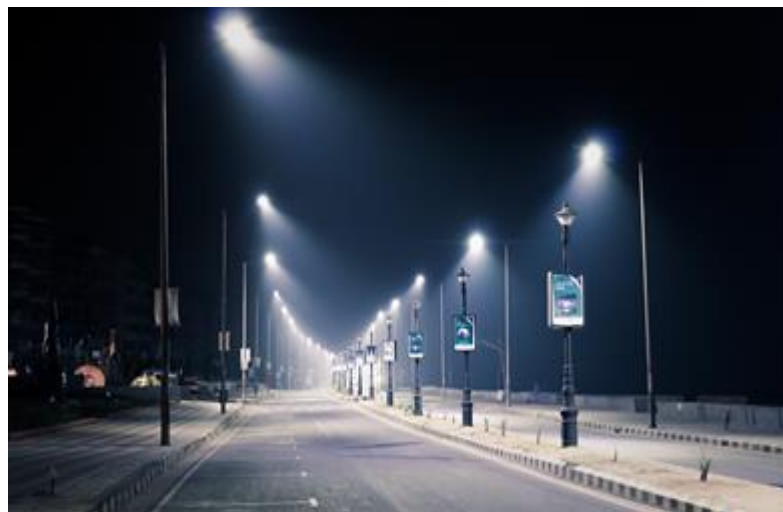
This qualification is also part of the highway electrical apprenticeship framework(s).

### The finer details

This qualification has been developed to give you the opportunity to develop the knowledge, understanding and skills required to support a career in the highway electrical sector.

This qualification offers five pathways:

- Camera



- Communications/VMS
- Public Lighting
- Slot Cutting.



#### Slot Cutting:

- Cutting to Specification
- Cable Laying and Sealing
- Testing and Repair of Cables
- Access to Cabinets Through
- Ducts.

The assessment will consist of multiple choice questioning, practical observation of assessment activities and verbal questioning.

Further information on unit content can be found in the qualification specification.

If successful in meeting the required standards assessed, you will be issued with a Lantra certificate for your chosen pathway.

This qualification can be used to support the ECS Highway Electrical Registration Scheme (HERS) card as part of NHSS 8.

### Who should attend?

This qualification is for you if you are entering employment for the first time or are currently working in the highway electrical sector and wish to develop your knowledge or progress further.

### What will be covered?

At the end of this qualification, your knowledge, understanding and skills will have been assessed in the following areas:

- Health, Safety and Environmental Implementation for Highway Electrical Works
- Safe Working Practices within Highway Electrical Sector
- Basic Highway Electrical Theory and Practice.

#### Highway Cameras:

- Installation Techniques
- Routine Maintenance Techniques
- Reactive Maintenance Techniques.

#### Communications/VMS:



- Fundamental Principles
- Installation of Non-Infrastructure Equipment
- Reactive Maintenance Techniques.



#### Public Lighting:

- Public Lighting Awareness
- Installation Techniques
- Routine Maintenance Techniques
- Reactive Maintenance Techniques
- Specialist Techniques - Surface Protection
- Specialist Techniques.

#### Slot Cutting:

- Cutting to Specification
- Cable Laying and Sealing
- Testing and Repair of Cables
- Access to Cabinets Through Ducts.

#### Traffic Signals:

- Traffic and Pedestrian Control Awareness
- Installation Techniques
- Routine Maintenance Techniques
- Reactive Maintenance Techniques
- Specific Techniques.

