

Lantra Awards Level 2 Technical Occupational Entry NVQ in Highway Electrical Systems (Diploma)



At a glance...

Qualification

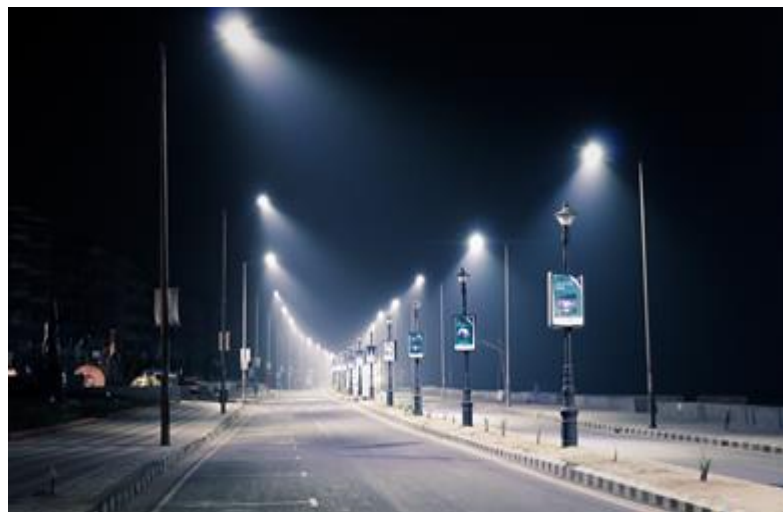
Delivery Method:	Classroom and practical observation and assessment
Recognised by:	National Highway Sector Scheme (NHSS) 8
Prerequisites:	<p>Entry for this qualification is available to any individual who is capable of achieving the required standard. Provider staff should understand the demands of the qualification and match Learners based on their individual capabilities and future progression requirements.</p> <p>This qualification has been developed to promote equal opportunities by eliminating any avoidable barriers which have the potential to restrict access or progression.</p> <p>There are no formal requirements for entry to this qualification however, Learners must be able to read and interpret information provided in English. Due to the nature of the work, Learners must also have a basic knowledge of first aid procedures.</p>

Introduction

Gain a nationally recognised Level 2 qualification for installing and maintaining electrical equipment in the highway electrical sector.

Overview in brief

The Lantra Awards Level 2 Technical Occupational Entry NVQ in Highway Electrical Systems (Diploma) qualifications has been developed to provide nationally



recognised certification for those looking to work in the highway electrical sector. This includes:

- those undertaking apprenticeships
- operatives already working in other highway electrical sector roles
- those working in other roles looking to enter or progress their career by working in the highway electrical sector.



This is a Competency Based Qualification (CBQ). This National Vocational Qualification (NVQ) is based on the Occupational Standards for Highway Electrical Maintenance and Installation Operative (Level 2).

This qualification has been designed in conjunction with the Highway Electrical Association (HEA) to assess the competence of operatives in the highway electrical sector. This NVQ satisfies the requirements for competency as stipulated in the National Highway Sector Scheme (NHSS) 8 Quality Management Document.

The Lantra Awards Level 2 Technical Occupational Entry NVQ in Highway Electrical Systems (Diploma) qualification includes pathways that reflect the sub-sectors of the highway electrical sector, including:

- Bus Shelters
- Cameras
- Communications and Variable Message Signs (VMS)
- Electric Vehicle Charging
- Electric Vehicle and On-street Charging
- Environmental Monitoring
- On-street Charging
- Public Lighting
- Slot Cutting
- Traffic Signals
- Variable Message Signs (VMS).

The finer details

By undertaking this qualification you will be able to demonstrate the knowledge, skills and behaviours required to be able to work safely and effectively in the highway electrical sector.

These qualifications aim to assess your knowledge, skills and behaviours in relation to:

- Applying health and safety, environmental and working practices
- Maintaining effective working relationships
- Preparing for the installation and maintenance of highway electrical systems and equipment



- Identifying and correcting faults in electrical systems, equipment and components
- Installing and connecting highway electrical systems, equipment and components
- Installing highway electrical infrastructure equipment
- Maintaining highway electrical systems, equipment and components
- Carrying out emergency work on highway electrical systems
- Applying surface protection to highway electrical systems
- Mechanical maintenance of highway electrical systems and equipment
- Coordinating the work of others.



Further information relating to content of these qualifications can be found in the Lantra Awards *Level 2 Technical Occupational Entry NVQs in Highway Electrical Systems Qualification Specification*.

Who should attend?

This qualification has been designed for those who want to work as operatives installing and/or maintaining highway electrical equipment, ensuring that work is completed safely, effectively and efficiently in the workplace.

In order to generate the evidence required for achievement of this qualification, you must either be working as an operative within the highway electrical sector or have a work placement where you will be installing and/or maintaining highway electrical equipment.

As you'll appreciate, this qualification contains some practical activity that will require a minimum level of fitness. If you have any concerns, please speak to the Provider.

What will be covered?

At the end of this qualification, your knowledge, skills and behaviours will have been assessed in the following areas:

- Applying health and safety, environmental and working practices
- Maintaining effective working relationships
- Preparing for the installation and maintenance of highway electrical systems and equipment
- Identifying and correcting faults in electrical systems, equipment and components
- Installing and connecting highway electrical systems, equipment and components
- Installing highway electrical infrastructure equipment
- Maintaining highway electrical systems, equipment and components
- Carrying out emergency work on highway electrical systems
- Applying surface protection to highway electrical systems
- Mechanical maintenance of highway electrical systems and equipment



- Coordinating the work of others.



Other areas of interest

Those who have successfully achieved the appropriate Level 2 qualification, may wish to progress on to the Lantra Awards Lantra Awards Level 3 Technical Occupational Entry NVQ in Highway Electrical Systems (Diploma).

